

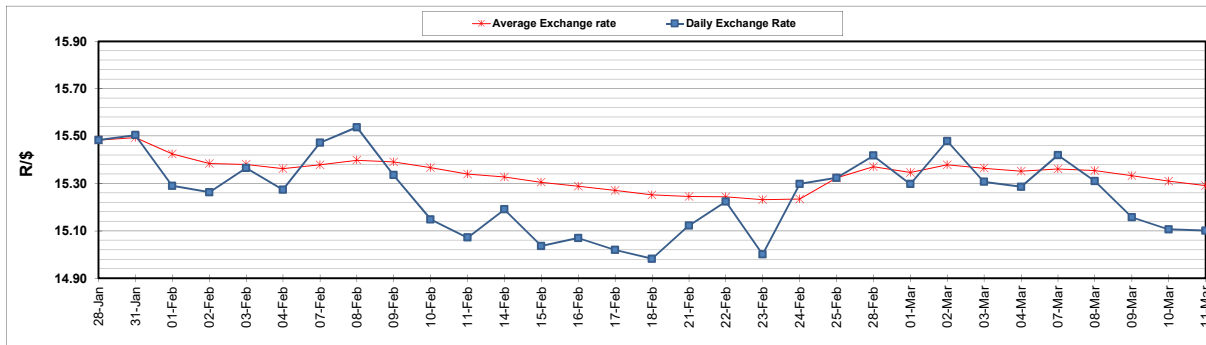
	PETROL 95 ULP	PETROL 93 ULP & LRP	DIESEL 0.05%	DIESEL 0.005%	ILL. PAR.
GAUTENG PUMP PRICE (SA c/l) AS FROM 02/03/2022	2,160.000	2,135.000	-	-	-
WHOLESALE PRICE (SA c/l) AS FROM 02/03/2022	-	-	1,948.880	1,955.280	1,318.688
SINGLE NATIONAL MAXIMUM RETAIL PRICE	-	-	-	-	1,690.000
BASIC FUEL PRICE - 11/03/2022 (SA c/l)	1,275.148	1,250.176	1,339.266	1,363.567	1,278.000
PRESS RELEASE CONTRIBUTION TO BFP 02/03/2022 - 11/03/2022 (SA c/l)	1,100.270	1,085.270	1,107.630	1,114.030	1,097.128
UNIT OVER/(UNDER) RECOVERY - 11/03/2022 (SA c/l)	(174.878)	(164.906)	(231.636)	(249.537)	(180.872)
AVERAGE BASIC FUEL PRICE 25/02/2022 - 11/03/2022	1,298.995	1,276.900	1,396.639	1,415.542	1,340.944
AVERAGE UNIT OVER/(UNDER) RECOVERY 25/02/2022 - 11/03/2022	(234.354)	(227.259)	(324.190)	(337.785)	(276.816)

### ANALYSIS MOVEMENT OF AVERAGE OVER/(UNDER) RECOVERY

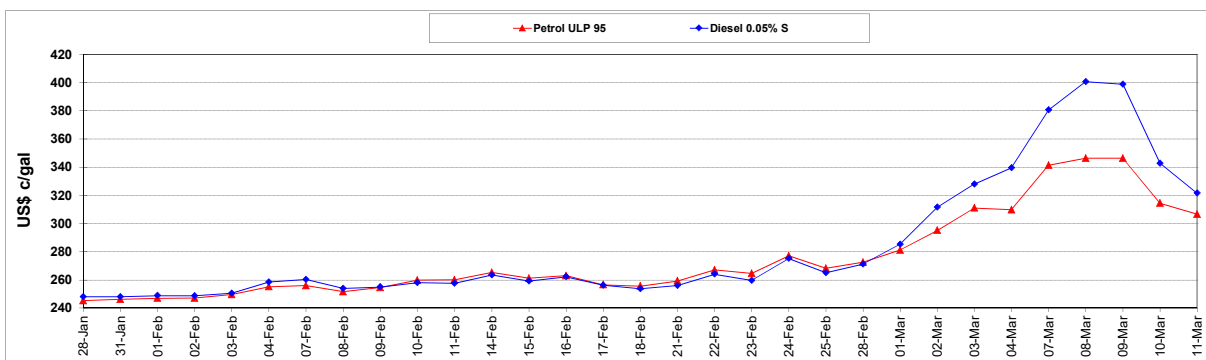
	PETROL 95	PETROL 93	DIESEL 0.05%	DIESEL 0.005%	ILL. PAR.
- MOVEMENT IN INTERNATIONAL PRODUCT PRICES	(229.507)	(222.495)	(318.979)	(332.504)	(271.813)
- MOVEMENT IN EXCHANGE RATE	(4.847)	(4.764)	(5.211)	(5.282)	(5.003)
AVERAGE UNIT OVER/(UNDER) RECOVERY 25/02/2022 - 11/03/2022	(234.354)	(227.259)	(324.190)	(337.785)	(276.816)

### R/\$ EXCHANGE RATE - (R/\$15.1010 - 11/03/2022)

#### EXCHANGE RATE USED IN BASIC FUEL PRICE



#### INTERNATIONAL PRODUCT PRICES OF BASKET USED IN BASIC FUEL PRICE



#### BASIC FUEL PRICE IN SA CENTS PER LITRE

